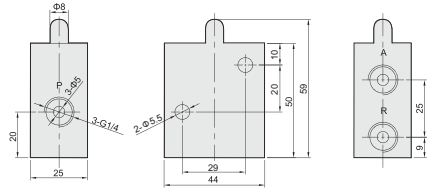
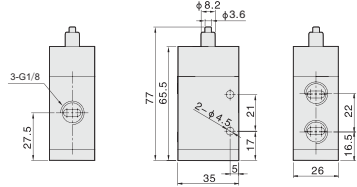


MJ32 Series



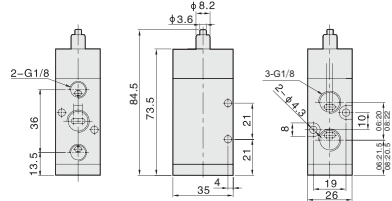
MJ32-08S1 MJ32-08S2 MJ32-08S3 MJ32-08S4 MJ32-08S5 MJ32-08S6

M32 Series



M32-08S1 M32-08S2 M32-08S3 M32-08S4 M32-08S5 M32-08S6 M32-08

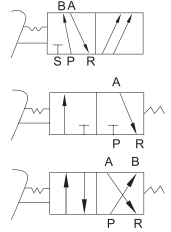
M52 Series



M52-08S1 M52-08S2 M52-08S3 M52-08S4 M52-08S5 M52-08S6 M52-08



F522-08



How to Order?

Series No.	Ways	Positions	Valve body size	Type	Port size	Valve type	Thread type
F: F series foot valve	3: 3 ways 4: 4 ways 5: 5 ways	2: 2 position	2: 2 series	Blank: No cover C: With cover	06: 1/8" 08: 1/4"	Blank: Basic type L: With lock N: New valve body LB: With lock, big valve body	Blank: G P: PT T: NPT

Order Example:
F series foot valve, 5/2 way, 2 series valve body, without cover, 1/4" port size, with lock, G thread, ERP code is: F522-08L

Product Features

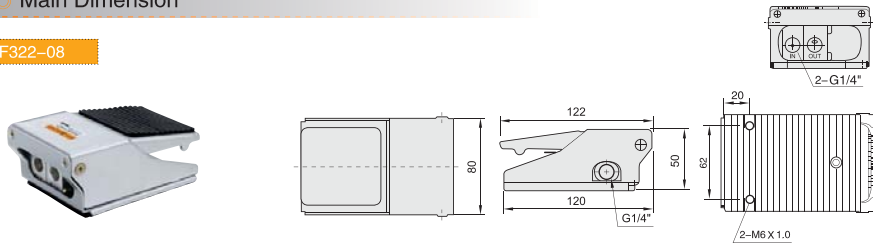
- * Strong design and work in harsh environment
- * Various types are available

Specifications

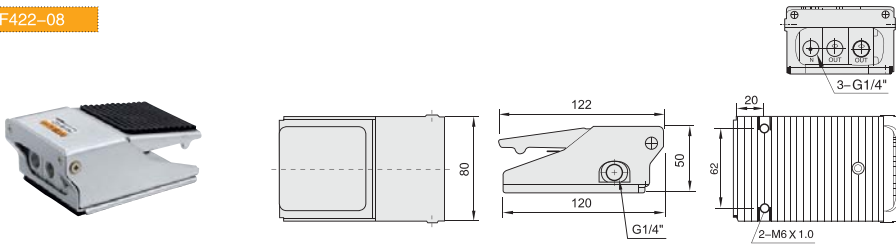
Model	F322	F422	F522
Working medium	Clean air(After 40 μm filtration)		
Acting type	External control		
Lubrication	Not required		
Working pressure (MPa)	0-0.8		
Max pressure (MPa)	1.2		
Working temperature (°C)	-5-60		
Port size	1/8", 1/4"		

Main Dimension

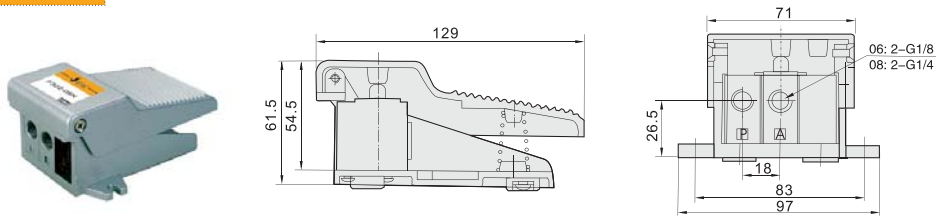
F322-08



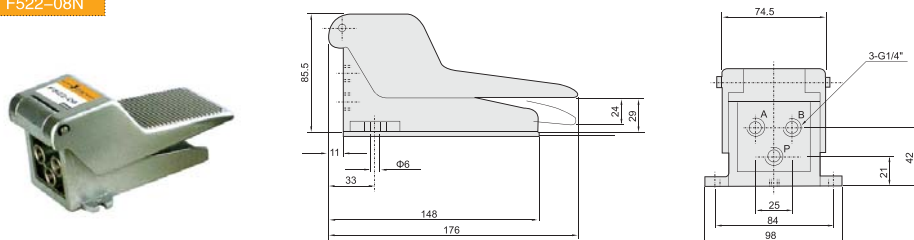
F422-08



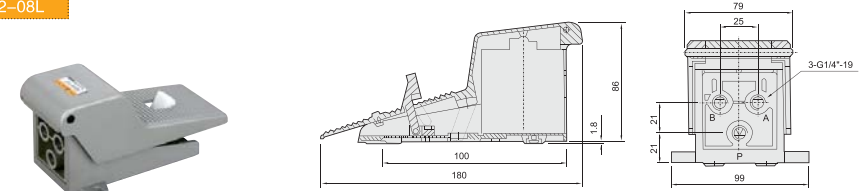
F322-08N



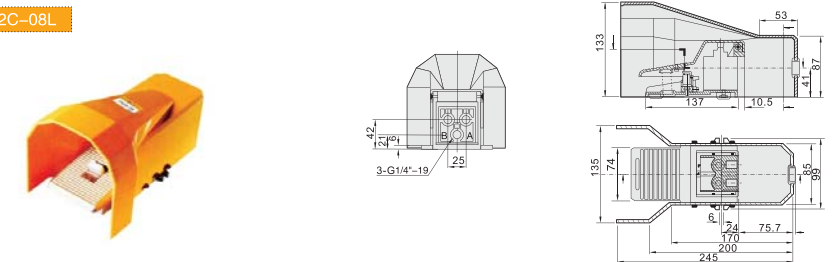
F522-08N



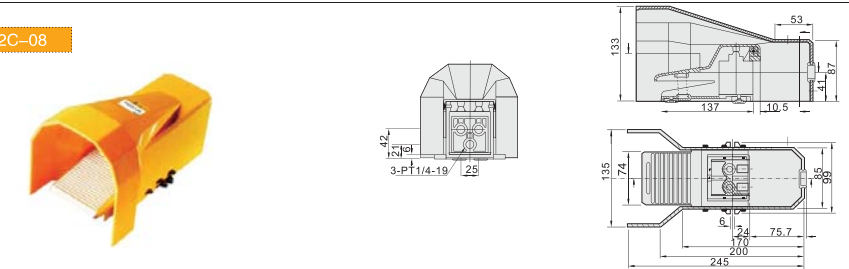
F522-08L



F522C-08L



F522C-08



F522C-06LB

